

Pump Data Sheet - DXB hq2500/35SAP



Company: DXB Pump & Power
 Name: Engineering
 Date: 07/01/2019

High flow pumpset hq2500/35SAP
 Scania Stage 5 331kw engine
 Maximum pump speed 1100rpm



Pump:
 Size: CRP450NHG550 Dimensions: Suction: 450mm
 Type: Encl Solids Handling Discharge: 450mm
 Synch Speed: Adjustable
 Dia: 558 mm
 Curve: CRP450NHG550

Fluid:
 Name: Water
 SG: 1 Vapor Pressure: 0.0177 bar a
 Density: 999 kg/m³ Atm Pressure: 1.01 bar a
 Viscosity: 1.1 cP
 Temperature: 15.6 °C

Pump Performance:
 Max Flow: 3200m³/hr Max Efficiency: 85%
 Head: 53m Static Head: 0 m

Pump Limits:
 Temperature: --- Sphere Size: 114 mm
 Wkg Pressure: ---

Pump Selection Warnings:
 None

Engine:
 Scania DC13-312A Stage 5 emission compliant diesel engine
 operating at up to 1750rpm with a final output of 300kw.
 The engine operates with a DPF and SCR emission treatment system.

--- Duty Point ---

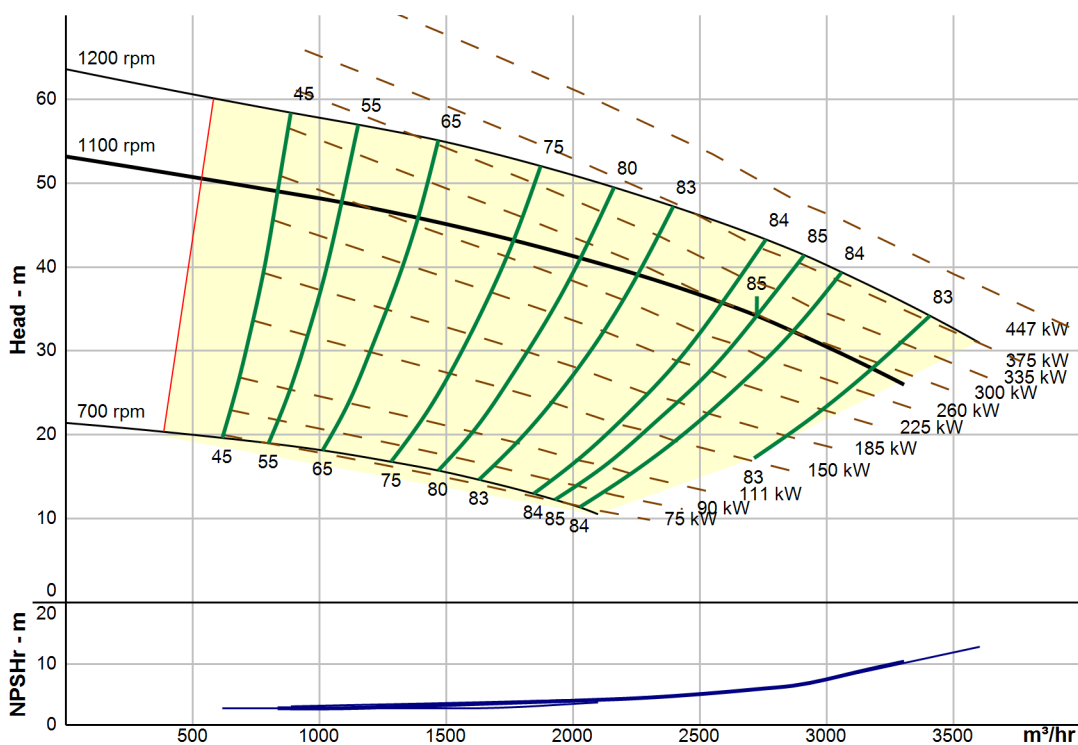
Flow: 2724 m³/hr
 Head: 34.2 m
 Eff: 85%
 Power: 298 kW
 NPSHr: 5.86 m
 Speed: 1100 rpm

--- Design Curve ---

Shutoff Head: 53.2 m
 Shutoff dP: 5.21 bar
 Min Flow: 545 m³/hr
 BEP: 85% @ 2724 m³/hr
 NOL Power:
 300 kW @ 2866 m³/hr

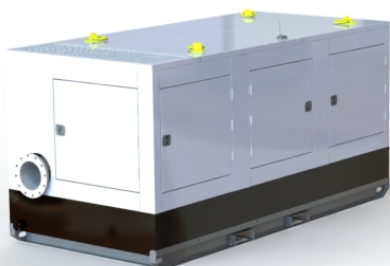
--- Max Curve ---

Max Power:
 390 kW @ 3059 m³/hr



Performance Evaluation:

Flow	Speed	Head	Efficiency	Power	NPSHr
m ³ /hr	rpm	m	%	kW	m
3173	1100	28	83	291	9.17
2644	1100	35.1	84	299	5.56
2115	1100	40.3	81	285	4.16
1586	1100	44.5	70	272	3.4
1058	1100	47.9	54	256	2.75



DXB PUMP & POWER hq2500/35SAP high flow sound attenuated pumpset is designed to operate in noise and emission sensitive environments such as EU countries where legislation dictates that only equipment with the cleanest engines and smallest carbon footprint may work.

The DXB Pump & Power pumpsets offer the highest flows with the lowest carbon dioxide output of any pumpsets currently available in Europe.

All DXB Pump & Power pumpsets come with a Cornell Redi-prime pump complete with 50cfm priming system and patented Cycloseal run dry mechanical seal design.