

Pump Data Sheet - DXB s1400/50SAP Pumpset



Company: DXB Pump & Power
 Name: Engineering
 Date: 07/01/2019

High Flow pumpset s1400/50SAP
 Scania Stage 5 331kw pumpset
 Maximum speed 1700rpm



Pump:			
Size:	CRP250NNT450	Dimensions:	Suction: 300 mm
Type:	Encl Solids Handling		Discharge: 300 mm
Synch Speed:	Adjustable		
Dia:	445 mm		
Curve:	CRP250NNT450		

Fluid:			
Name:	Water		
SG:	1	Vapor Pressure:	0.0177 bar a
Density:	999 kg/m ³	Atm Pressure:	1.01 bar a
Viscosity:	1.1 cP		
Temperature:	15.6 °C		

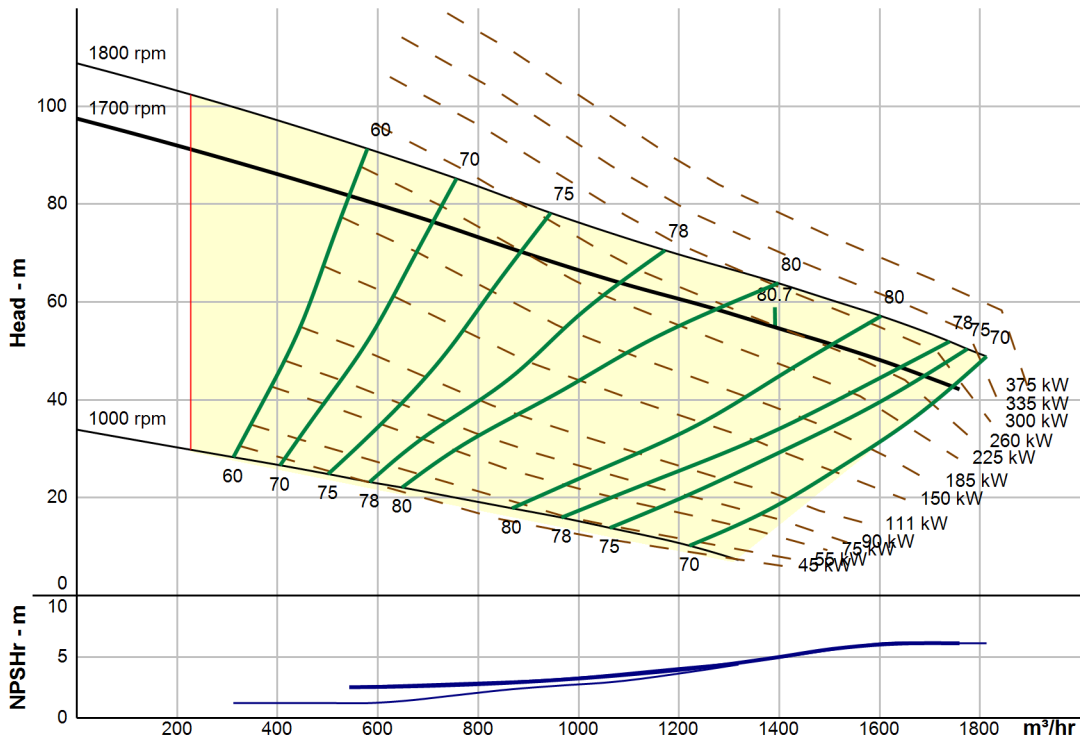
Search Criteria:			
Max Flow:	1700m ³ /hr	Max Eff:	80%
Max Head:	95m	Static Head:	0 m

Pump Limits:			
Temperature:	121 °C	Sphere Size:	85.0 mm
Wkg Pressure:	8.62 bar g		

Pump Selection Warnings:
 None

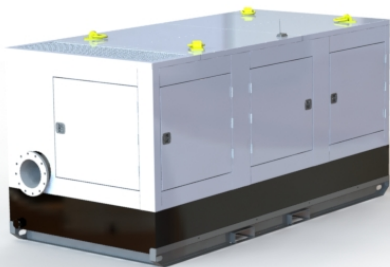
Engine:
 Scania DC13-312A Stage 5 emission compliant diesel engine operating at up to 1750rpm with a final output of 300kw. The engine operates with a DPF and SCR emission treatment system.

--- Duty Point ---	
Flow:	1392 m ³ /hr
Head:	54.8 m
Eff:	81%
Power:	257 kW
NPSHr:	4.93 m
Speed:	1700 rpm
--- Design Curve ---	
Shutoff Head:	97.5 m
Shutoff dP:	9.55 bar
Min Flow:	227 m ³ /hr
BEP:	80.7% @ 1392 m ³ /hr
NOL Power:	294 kW @ 1759 m ³ /hr
--- Max Curve ---	
Max Power:	344 kW @ 1813 m ³ /hr



Performance Evaluation:

Flow	Speed	Head	Efficiency	Power	NPSHr
m ³ /hr	rpm	m	%	kW	m
1688	1700	44.9	75	275	6.11
1407	1700	54.4	81	258	5.03
1126	1700	62.7	78	244	3.67
844	1700	71.7	74	222	2.86
563	1700	81.1	61	202	2.53



DXB PUMP & POWER 300mm high flow sound attenuated pumpset is designed to operate in noise and emission sensitive environments such as EU countries where legislation dictates that only equipment with the cleanest engines and smallest carbon footprint my work.

The DXB Pump & Power pumpsets offer the highest flows with the lowest carbon dioxide output of any pumpsets currently available in Europe.

All DXB Pump & Power pumpsets come with a Cornell Redi-prime pump complete with 50cfm priming system and patented Cycloseal run dry mechanical seal design.