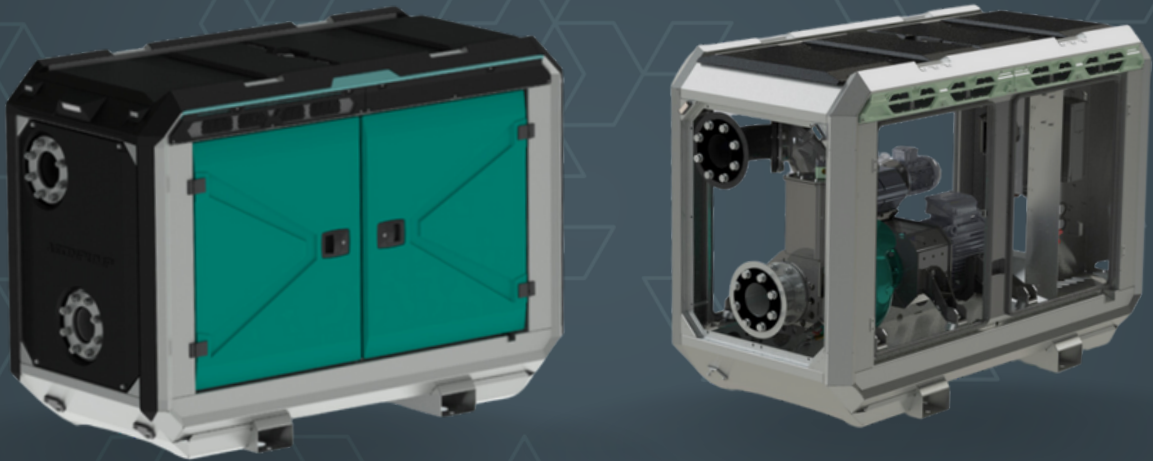


AEDONPUMP

RAPTOR 6E



ELECTRICALLY

**DRIVEN SEWAGE
AND DEWATERING PUMP**

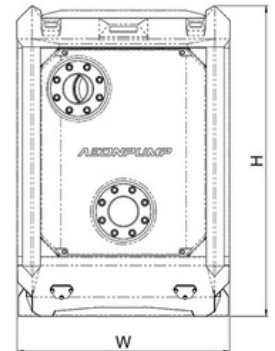
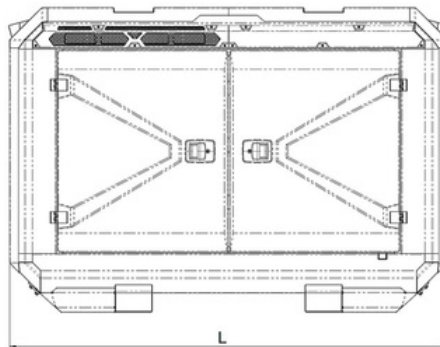
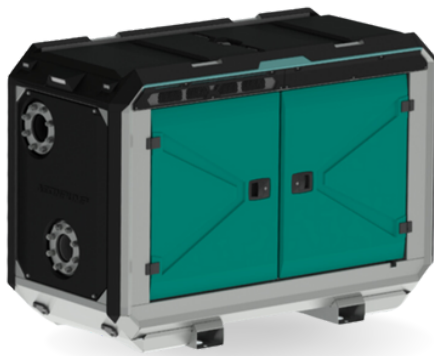
FEATURES AND COMPETITIVE EDGE

Type: **RAPTOR 6E**
Connection size: **6"**

Frame LxBxH: **2300x1100x1600 mm**
Dry weight: **1150 kg**

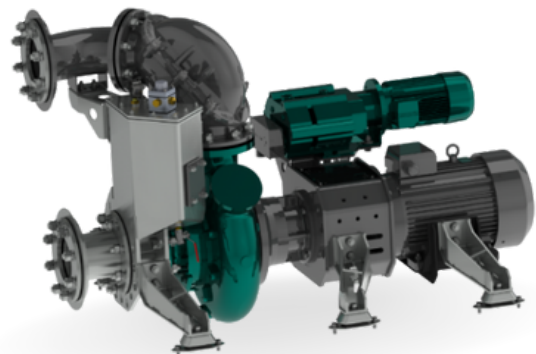
Designed for heavy duty applications in sewage, drainage and dewatering bypass;

- Long maintenance intervals;
- High quality parts and long lifetime;
- Innovation, online telemetry and remote access capability;
- Industry leading efficiency



PUMP TECHNICAL SPECIFICATION

Pump Pump type: **E06R-HMN1R**
Max. flow: **400 m³/h**
Max. pressure: **25 m**
Impeller type: **Screw impeller**
Solids handling: **100 mm**
Temperature: **max. 40 °C**
Wear Ring: **GG20 (0.6020)**
Shaft: **1.4021**
Shaft Sealing: **WC/SiC/NBR**
O-Rings: **NBR**
Casing: **GG25 (0.6025)**
Impeller: **GGG60 (0.7060)**
SuctionLiner: **GG20 (0.6020)**
Suction liner adjustable by external regulation screws.





Electrical Motor Power kW: **15 kW**
Rated Voltage: **400/690V 50Hz**
4-pole: **1470 RPM**



Priming System Air handling capacity: **60 m3/h**
Max. vacuum: **9.0 m**
Floatbox: **1.3 kW**
Non return valve: **Hot dip galvanized steel**
Non return valve: **Ductile iron GJS400**
Check valve ball: **Rubber NBR**



ELECTRICAL MOTOR CONTROLLER OPTIONS

Standard Frequency converter

- AEONPUMP Software
- Automatic level control
- Dual float switch
- Hydrostatic level sensor *
- SMS alarm system *
- Online telemetry *

*Optional



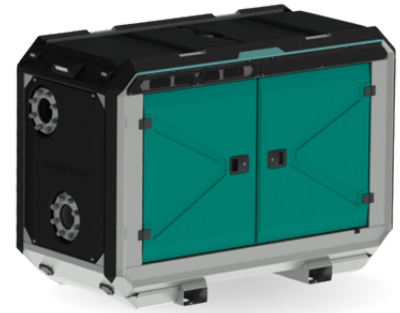
Retro Frequency converter

- Star/Delta
- Dual float switch
- Phase control
- Hour meter
- Socket 32 A



FRAME OPTIONS

Silent Canopy Frame or canopy: **Stackable**
Material: **Hot dip galvanized steel**
Dimensions LxWxH: **2300x1100x1600 mm**
Lifting point: **Single lifting point**
Forklift pockets: **Forklift pockets**

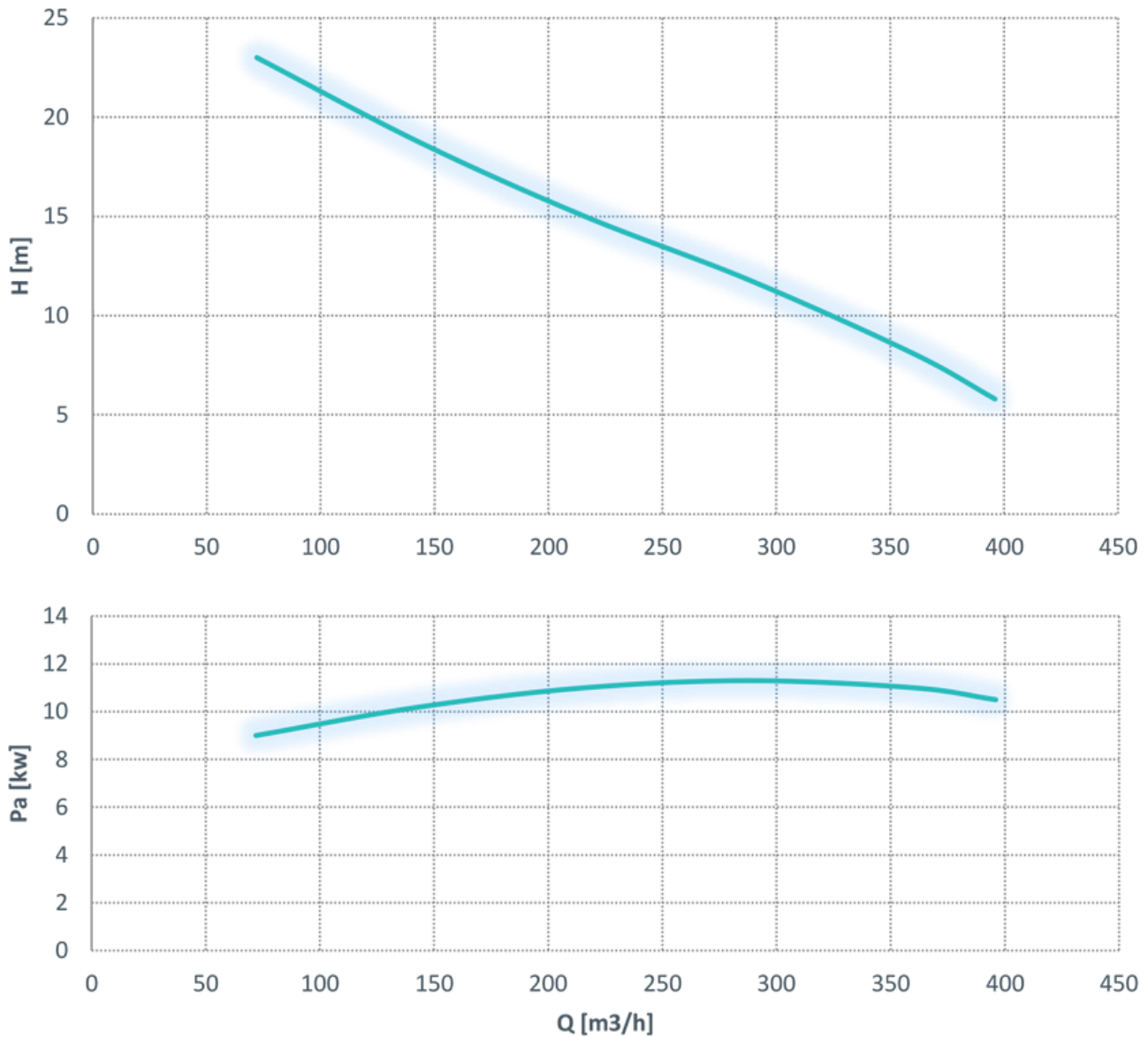


Open Canopy Frame or canopy: **Stackable**
Material: **Hot dip galvanized steel**
Dimensions LxWxH: **2300x1100x1600 mm**
Lifting point: **Single lifting point**
Forklift pockets: **Forklift pockets**





Curves at speed 1470 rpm
(Testing according ISO 9906:2012-38)



Note: Pump power P include mechanical seal friction and bearing frame losses, from a run in bearing frame.